

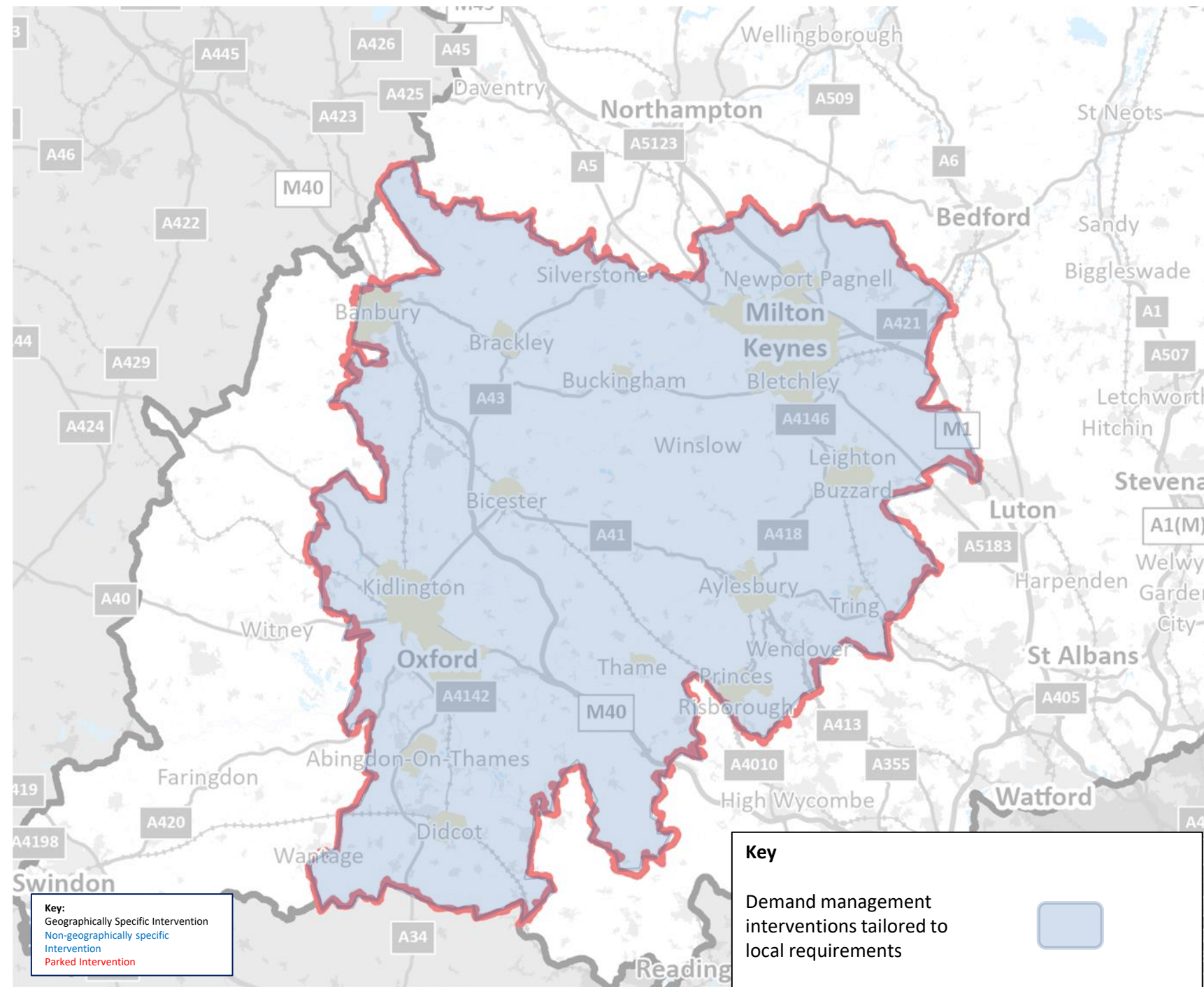
# 1. Digital and Demand Management

## Urban Demand Management

- National road user charging scheme that is dynamic to mileage, congestion, air quality, vehicle types;
- Local LEZ, ULEZ and ZEZs
- Car Free Town/City Centres
- Workplace Parking Levy
- Car park dynamic pricing
- Residential & Workplace Parking Standards

## Increase digital connectivity

- Advanced wireless connectivity on public transport
- Support digital hubs in rural areas



## 2. Making best use of reallocated road space

### Bus-based MRT

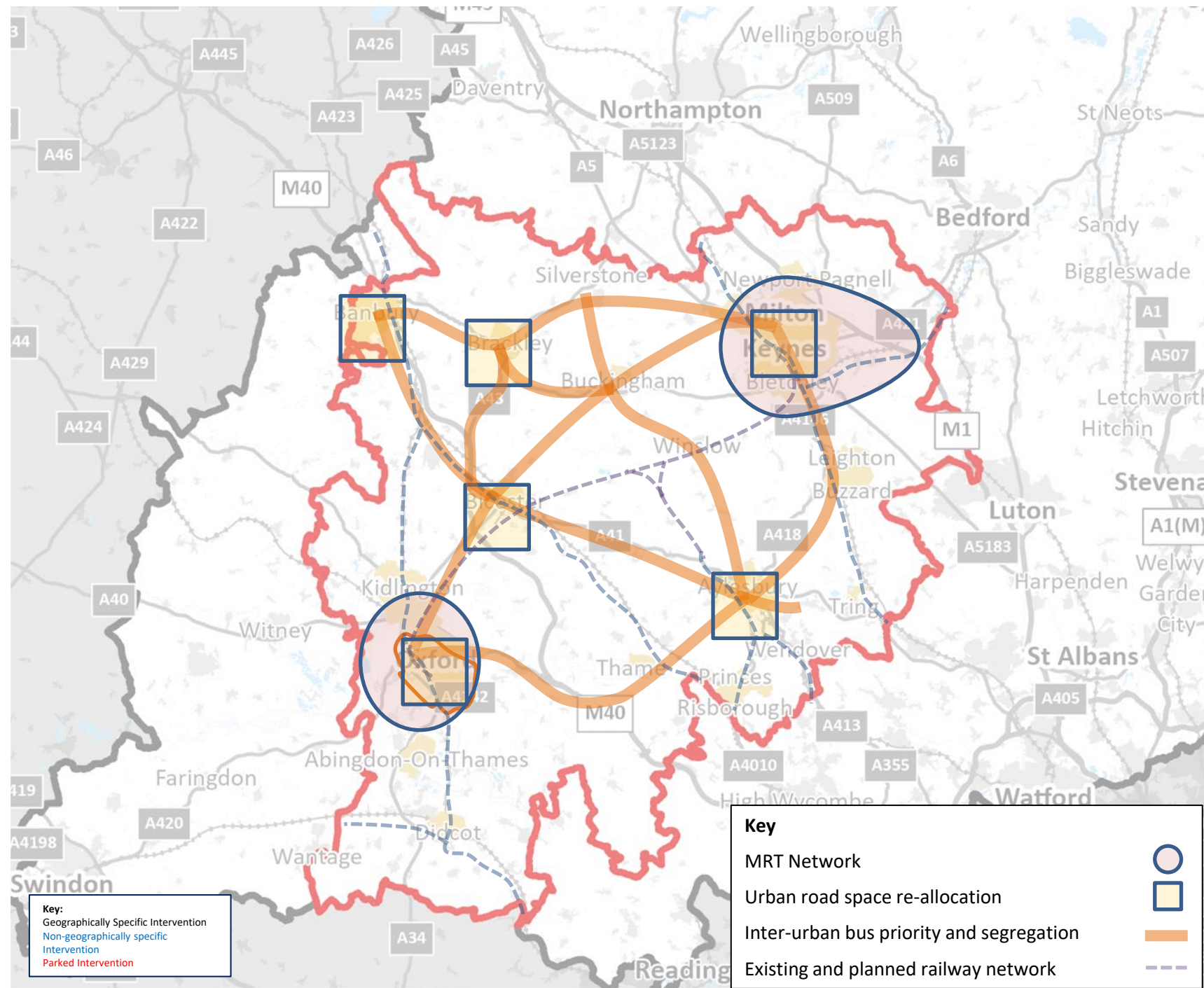
- Oxford Bus Based Rapid Transit
- Milton Keynes MRT Network

### Roadspace reallocation to public transport

- Urban road space reallocation

### Inter-urban bus priority measures in targeted locations

- Milton Keynes to Aylesbury to Oxford
- Milton Keynes – Buckingham - Bicester – Oxford
- Milton Keynes to Banbury (Via AVEZ - Silverstone)
- Milton Keynes to Banbury (Via Brackley and Buckingham)
- Banbury to Bicester to Aylesbury
- Aylesbury to AVEZ - Silverstone via Winslow and Buckingham
- [Local free public transport schemes](#)



**Key:**  
 Geographically Specific Intervention  
 Non-geographically specific Intervention  
 Parked Intervention

**Key**

- MRT Network
- Urban road space re-allocation
- Inter-urban bus priority and segregation
- Existing and planned railway network

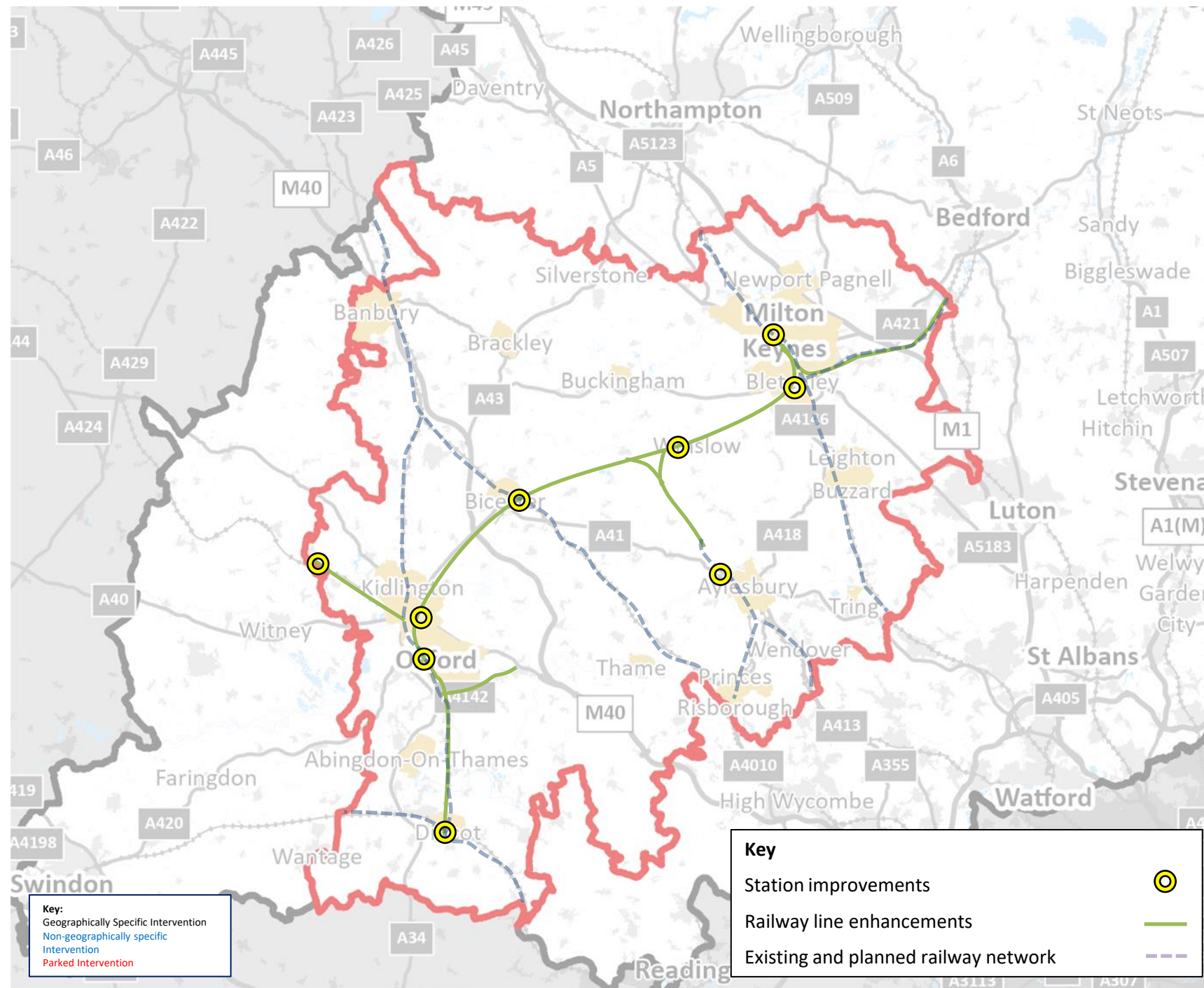
### 3. Supporting rail to provide fast, reliable strategic connectivity

#### Intervention to optimize the benefits of East West Rail

- East West Rail Aylesbury Link
- East West Rail Aylesbury Link (west)
- East West Rail Bletchley north east chord
- East West Rail Electrification
- Oxford North Junction upgrade
- Cowley Branch line

#### Integration of East West Rail with local transport network

- East West Rail Strategic Transport interchanges
  - a. Winslow
  - b. Bicester
  - c. Oxford
  - d. Oxford Parkway
  - e. Aylesbury
  - f. Bletchley
  - g. Milton Keynes
- Double tracking Oxford to Hanborough
- Hanborough Station additional platform and crossovers
- Wolvercote Rail Junction – Capacity Upgrades



## 4. Supporting mode shift to active and sustainable modes

### Network of multi-modal mobility hubs

- Oxford outer P&R sites
- Milton Keynes P&R sites
- Ridgmont Strategic Mobility Hub
- Strategic network of mobility hubs
- Rural mobility hubs

### Inter-urban active travel network

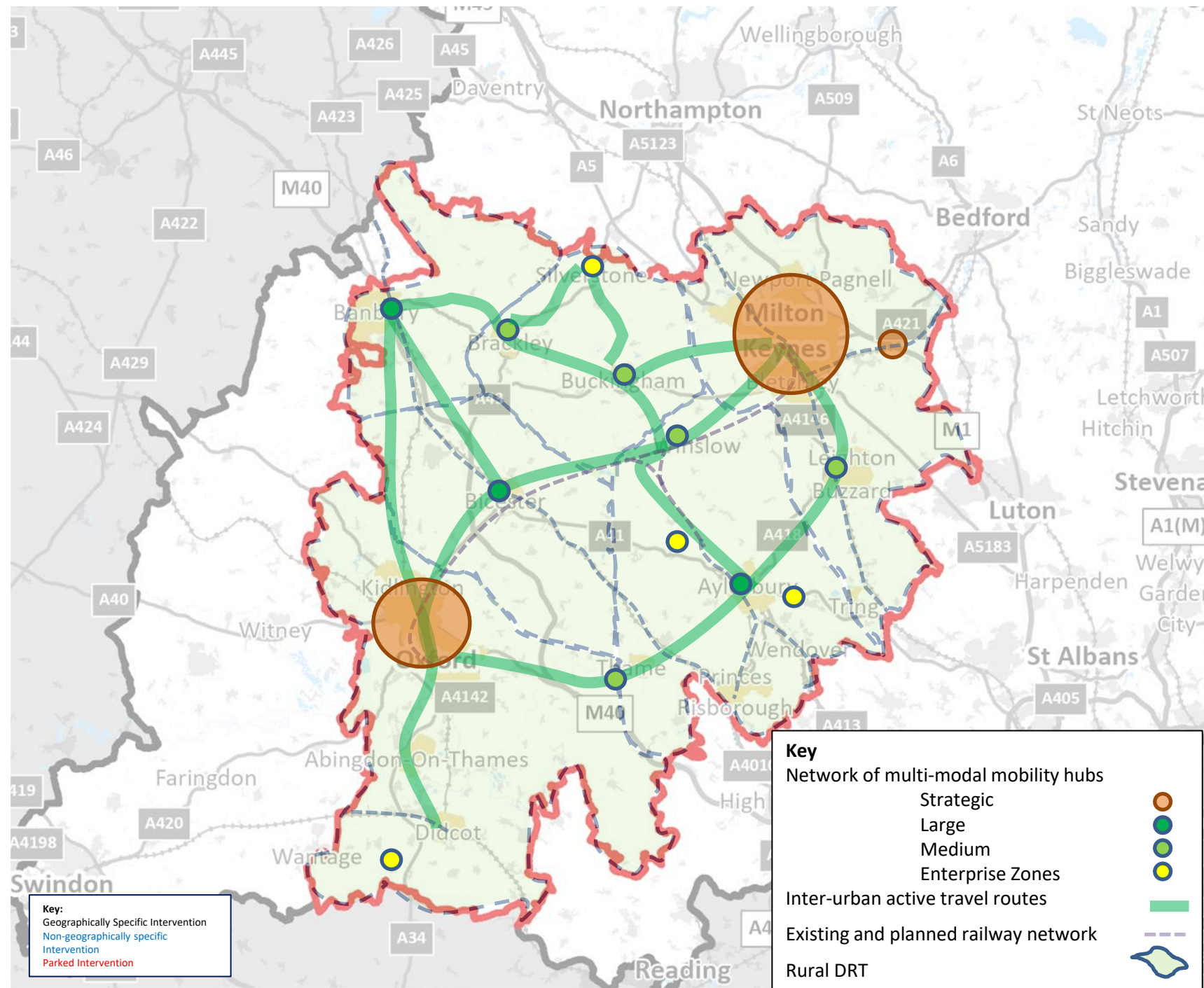
- Buckinghamshire Greenway to Brackley
- Brackley to Banbury
- Brackley to Milton Keynes
- New cycle route between Banbury and Bicester
- Missing link between NCN 57 at Thame and NCN 6 at Leighton Buzzard
- Upgrade NCN 5 (Didcot to Banbury)
- Upgrade NCN 51 (Oxford to Milton Keynes)
- Rural DRT

### Support delivery of Mobility as a Service.

- Multi modal, integrated, consistent fares and ticketing
- Mobility as a Service (MaaS)

### Increase adoption of shared mobility solutions

- Cycle hire schemes
- Expansion of car clubs
- Micro-mobility
- Development of rural car clubs
- Mobility Management Plans
- Behaviour Change Campaigns



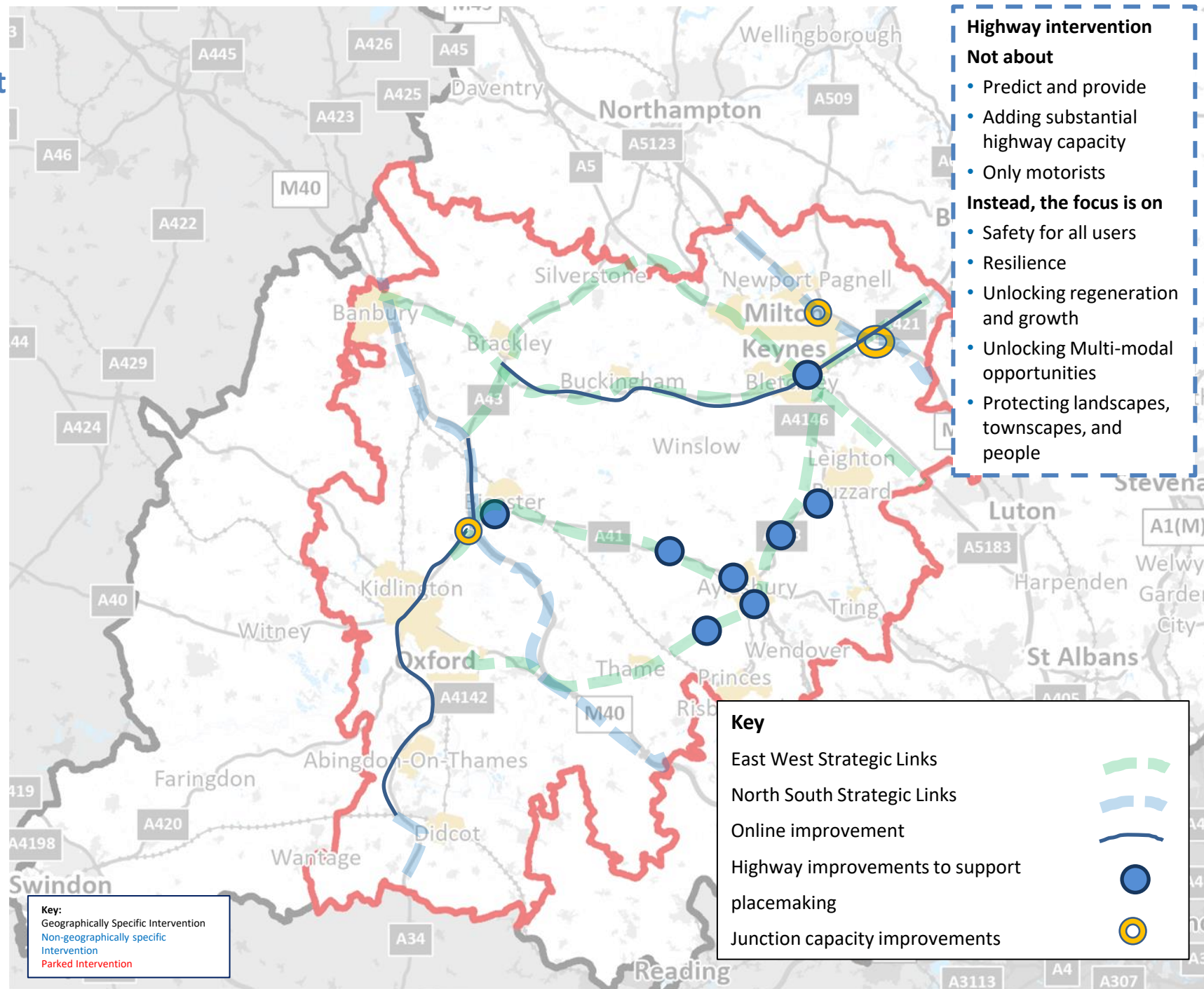
## 5. Enabling sustainable, planned development and a decarbonised fleet

### Strategic highways safety and resilience

- M1 Junction 13 and 14
- Reliability and Safety Improvements for bus and active travel along the A34
- M40 Junction 9-10 junction and safety improvements

### Highway improvements on key east-west links to support placemaking

- A421: Journey time reliability and future resilience
- A41: Bicester South East Perimeter Road
- A41: Waddesdon Placemaking
- A418: Dinton, Stone, Upton, Hartwell Placemaking
- A418: Aylesbury Northern and Southern Ring Roads
- A418: Rowsham Placemaking
- A418: Wing Placemaking
- **Smart and efficient highway network accelerating uptake of alternative fuel vehicles through infrastructure.**
- Traffic Management
- CAV Roadside Infrastructure
- Smart parking
- AI-assisted road condition monitoring
- Electrical Vehicle Charging infrastructure



**Highway intervention**  
**Not about**

- Predict and provide
- Adding substantial highway capacity
- Only motorists

**Instead, the focus is on**

- Safety for all users
- Resilience
- Unlocking regeneration and growth
- Unlocking Multi-modal opportunities
- Protecting landscapes, townscapes, and people

**Key:**  
 Geographically Specific Intervention  
 Non-geographically specific Intervention  
 Parked Intervention

**Key**

- East West Strategic Links
- North South Strategic Links
- Online improvement
- Highway improvements to support placemaking
- Junction capacity improvements

## 6. Sustainable and efficient freight solution

### Sustainable urban goods transport

- First Mile / Last Mile Sustainable freight delivery
- Freight consolidation centres on the outskirts of towns

### Freight friendly highway interventions on strategic links

- HGV parking areas
- HGV lanes at key junctions and on steep hills
- HGV signal priority
- Freight hubs on SRN

### Freight on rail optimization

- East West Rail passing loops
- Rail freight Interchange north west of Bicester
- Rail Freight Interchange at Bicester MOD

